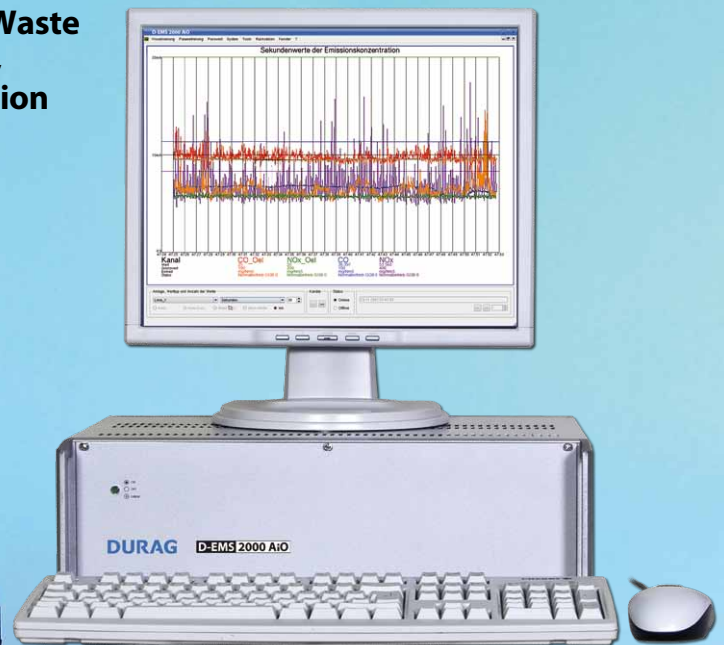


D-EMS 2000 AiO

Emissions Evaluation Computer with Solid State Drive

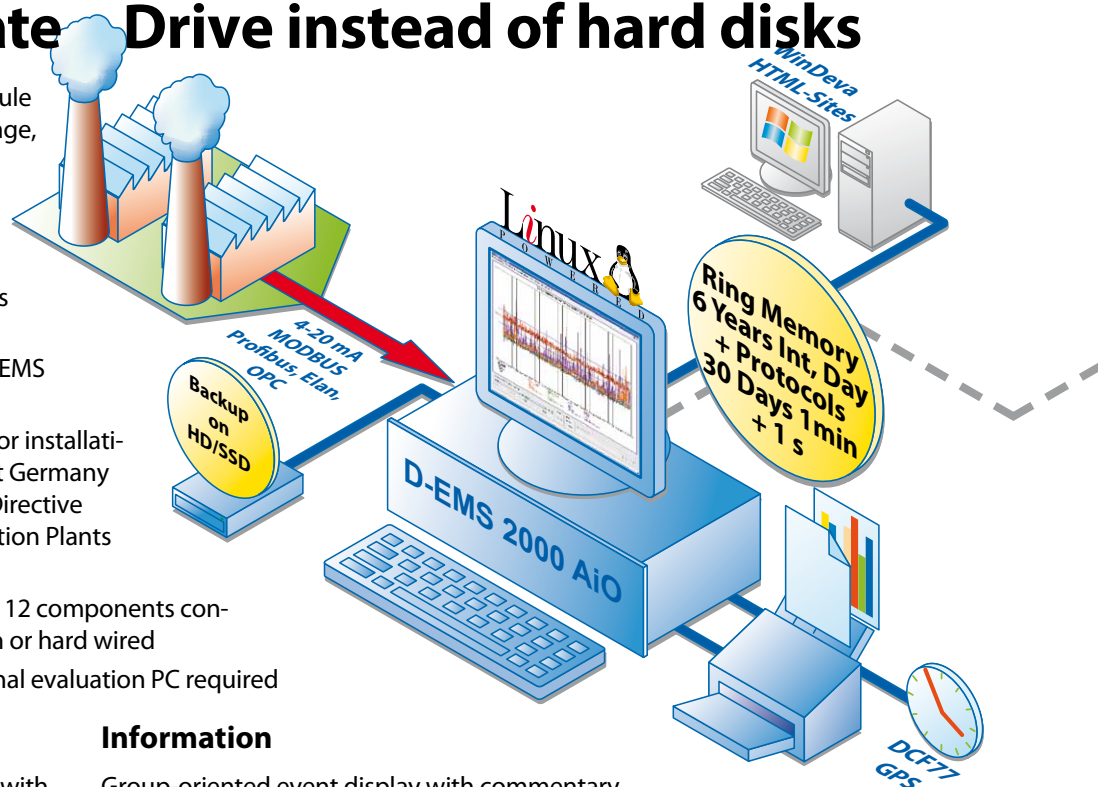
Modern Flash Memory Technology instead of hard disks
Economically priced all-in-one module

- Suitability-tested for all installations of Waste Incinerators acc. to German Regulations, Directive 2000/76EC and Large Combustion Plants acc. to Directive 2001/80/EC
- Fulfils EN14181 requirements
- EN15267 certified
- Freely parameterisable



The economically priced all-in-one computer with Solid State Drive instead of hard disks

- Independently operating module for acquisition, long-term storage, calculation and visualisation of environmental and process data
- Instrument for monitoring officially prescribed limit values with automatic logging
- Component of the modular D-EMS 2000 system
- Suitability-tested by TÜV Süd for installations in accordance with TA-Luft Germany for Waste Incinerators acc. to Directive 2000/76/EC and Large Combustion Plants acc. to Directive 2001/80/EC
- Continuous monitoring of 1 to 12 components connected via bus communication or hard wired
- „All-in-one“ system no additional evaluation PC required

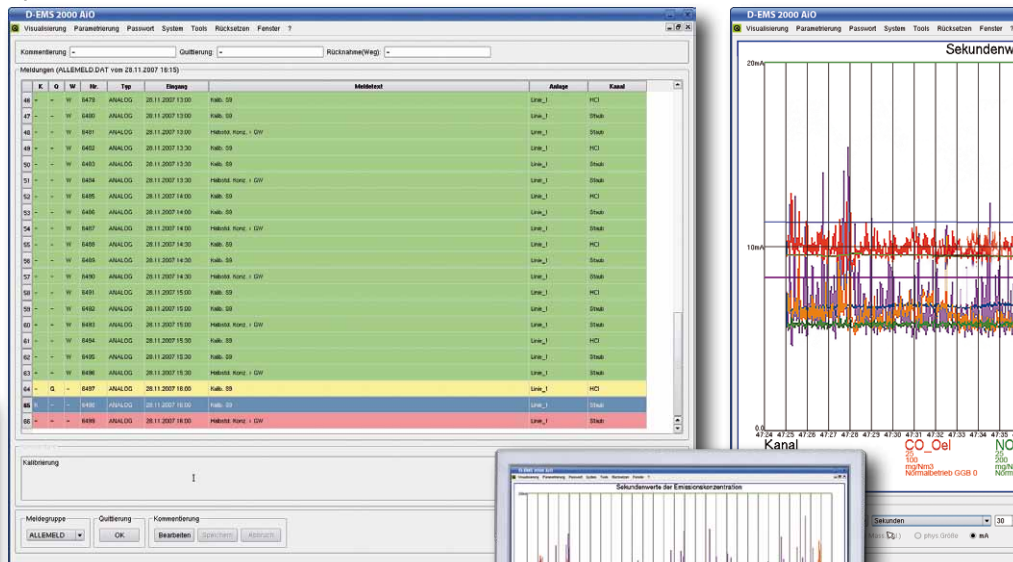
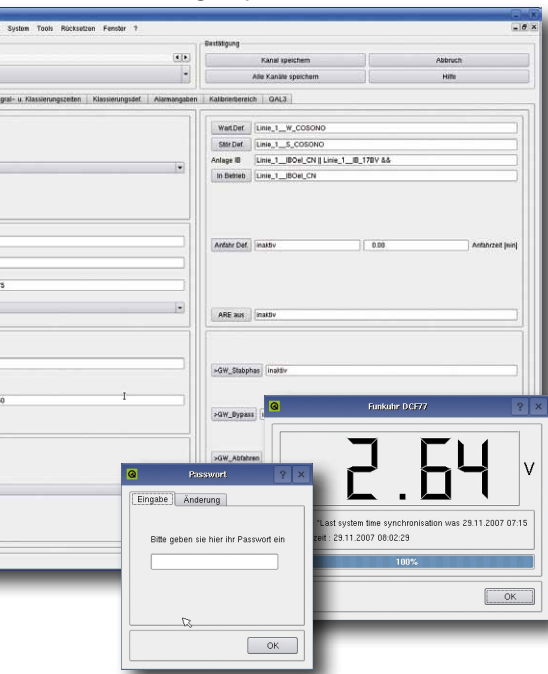


Parameterisation

System adaptation in accordance with licensing requirements and orders

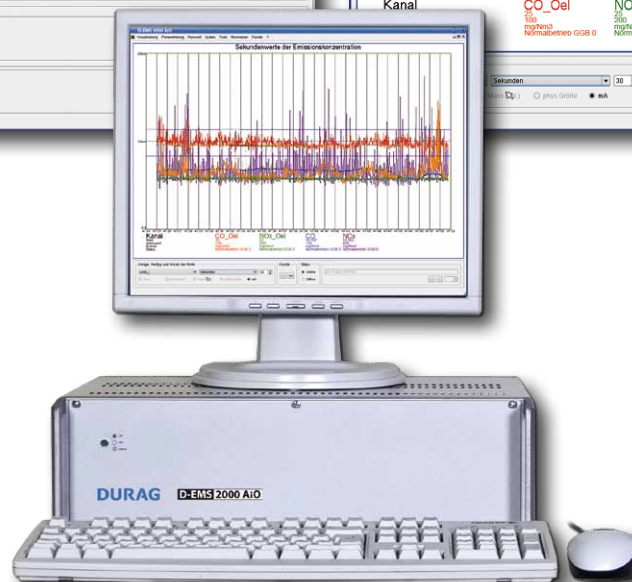
Information

Group-oriented event display with commentary option and colour status information

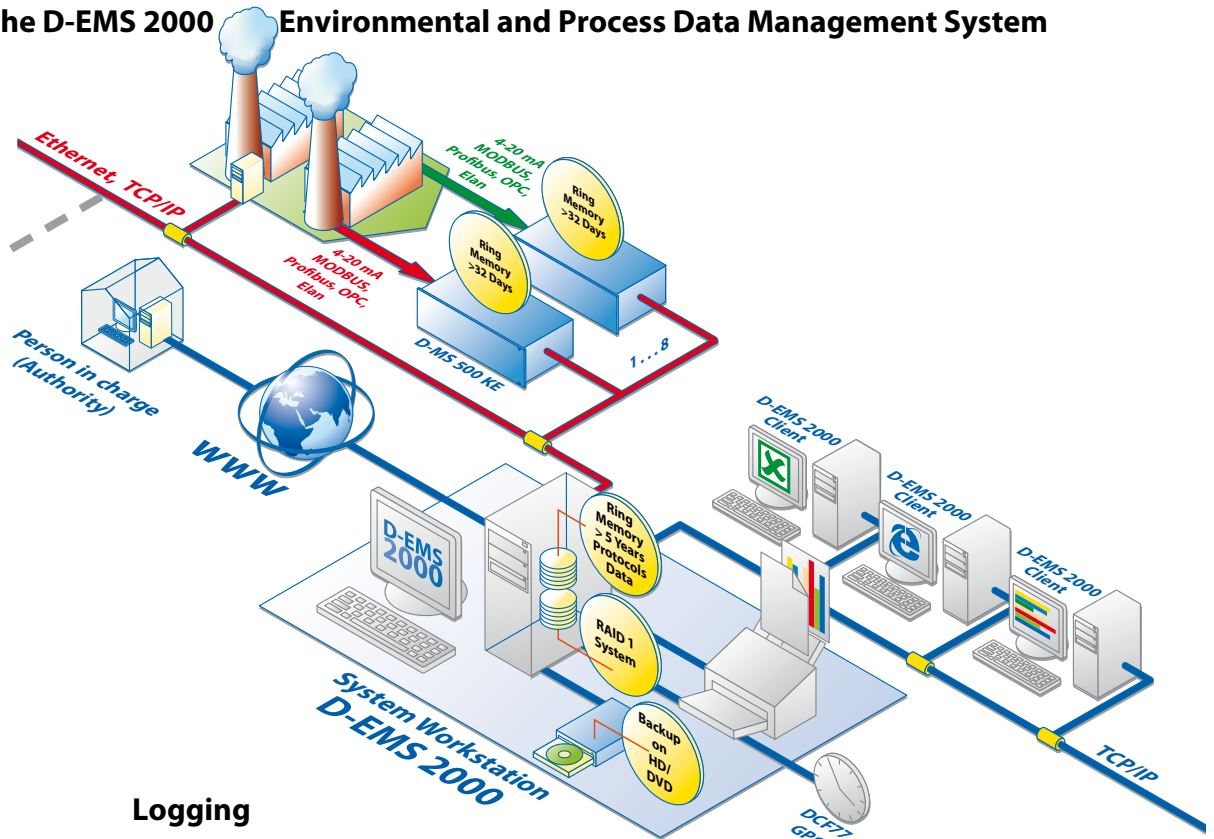


Three device types are available

- Compact system in 19" 3HE rack
- Desktop version with monitor/ keyboard/mouse
- 19" plug-in unit with pullout keyboard / display unit

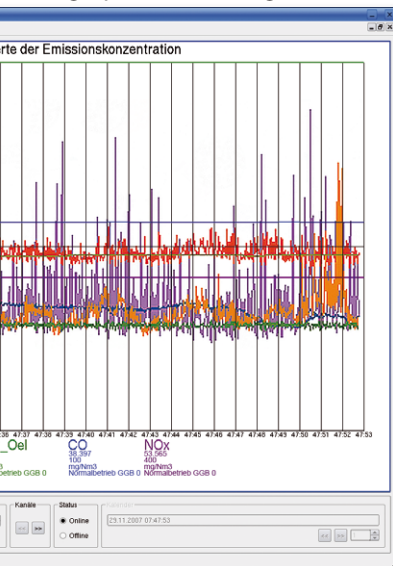


A module of the D-EMS 2000 Environmental and Process Data Management System



Evaluation

Display of current and historic data in bargraph and line diagrams



Logging

Classification protocols and individual values in daily, monthly and annual tables



Modules of the total D-EMS 2000 system

- D-PM.www** Provision of emission data for person in charge via Internet
- D-EFÜ.www** Provision of emission data for the authority via the Internet
- D-RWS** Storage of raw values with a resolution of 1 s
- D-RED** External redundant storage of measured values and logs
- D-EVA-Win** Visualisation software for workstation PCs in customer's data networks
- D-PM.MS** Direct access by MS-Excel to the D-EMS 2000 database
- D-QAL** Automated calculation of drift and precision as well as creation of CUSUM cards
- D-Bube** Automated creation of emission declaration in accordance with 11th BImSchV, 13th BImSchV and PRTR
- D-CDM** Certified proof of CO₂ reduction in greenhouse gas projects in accordance with UNFCCC
- D-HTML** Module for web-based data visualization
- D-AMS Control** Free configurable step control for automatically analyser's calibration, back purging etc.
- D-US EPA** Evaluation software according to US EPA 40CFR60 and 40CFR75

D-EMS 2000 AiO

Emissions evaluation computer for small to medium-sized installations in energy and heat generation, for waste incineration plants and in crematoriums as well as for installations in the chemical and cement industry.

Device types	- Compact system in 19" 3HE rack - Desktop version with monitor/keyboard/mouse - 19" plug-in unit
Computer	Power PC with Linux operating system, 1 GByte RAM and Solid State Flash Drive
Security	Protected storage of all official data including classification protocols for the legally required periods
Inputs / outputs	Max. 3 boards: Combi board 4 AI, 8 DI, 2 AO, 4 DO Input board 8 AI, 15 DI Output board 8 AO Output board 16 DO
Connection of bus systems	(Modbus, Profibus, Elan) Analogue/digital inputs: 12/24 Analogue/digital outputs: 8/16
Interfaces	2x Ethernet RJ 45 4x USB 2.0 DCF 77 Antenna socket BNC Analogue modem/ ISDN RJ 45 2x RS 232 1x RS 485 (up to 3x RS 485 also optionally possible)
Operating voltage	115/230 VAC / 50/60 Hz / 100 VA



DURAG data systems GmbH · Kollastraße 105 · 22453 Hamburg · Germany
Tel. +49 40 55 42 18-3000 · Fax +49 40 55 42 18-3099 · Email: info@durag-data.de

DURAG Branch Office North
Kollastraße 105
22453 Hamburg · Germany
Tel. +49 40 55 42 18-0
Fax +49 40 58 41 54
Email: DURAG-Nord@durag.de

Branch Office East
Halsbrücker Straße 34
09599 Freiberg · Germany
Tel. +49 3731 30 04-0
Fax +49 3731 30 04-22
Email: DURAG-Ost@durag.de

DURAG France S.a.r.l.
Parc GIP Charles de Gaulle
49, rue Léonard de Vinci · BP 70166
95691 GOUSSAINVILLE CEDEX · France
Tel. +33 1 301 811 80
Fax +33 1 393 383 60
Email: info@durag-france.fr

DURAG Branch Office West
An der Pönt 53a
40885 Ratingen · Germany
Tel. +49 2102 74 00-0
Fax +49 2102 74 00 28
Email: DURAG-West@durag.de

Branch Office South
Weidenweg 16
73087 Bad Boll · Germany
Tel. +49 7164 912 25-0
Fax +49 7164 912 25-50
Email: DURAG-Sued@durag.de

DURAG UK Office
Suite 17, Brookside Business Park
Cold Meece · Stone ST15 0RZ
Great Britain
Tel. +44 1785 760 007
Fax: +44 1785 760 014
Email: durag.uk@durag.de

www.durag-data.de

© DURAG GROUP 01/2012
Subject to change without notice